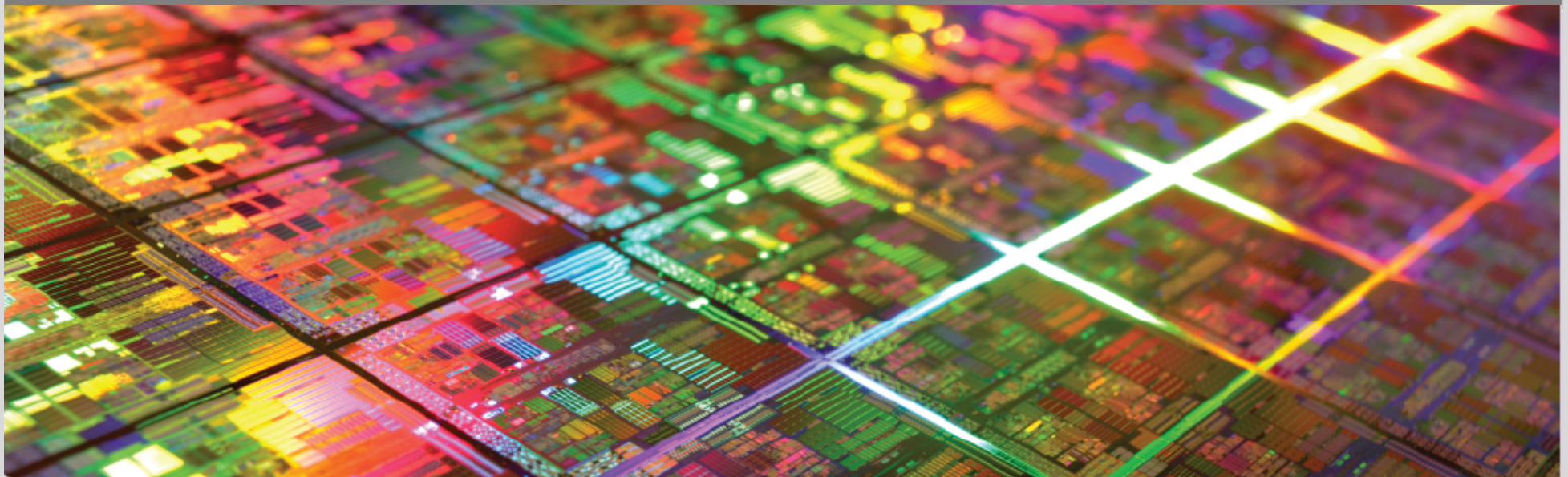


WG4: Language Integration & Tools

Wolfgang Karl

Fakultät für Informatik – Lehrstuhl für Rechnerarchitektur und Parallelverarbeitung



Discussion

■ Language integration

- Are standardization activities useful?
 - Does a common API help?
 - Industry activities – cannot be ignored!

■ Runtime systems

- Adaptation

■ Tools

- What are the features?
 - Debugger
 - Profiler
 - Performance analysis / tuning